

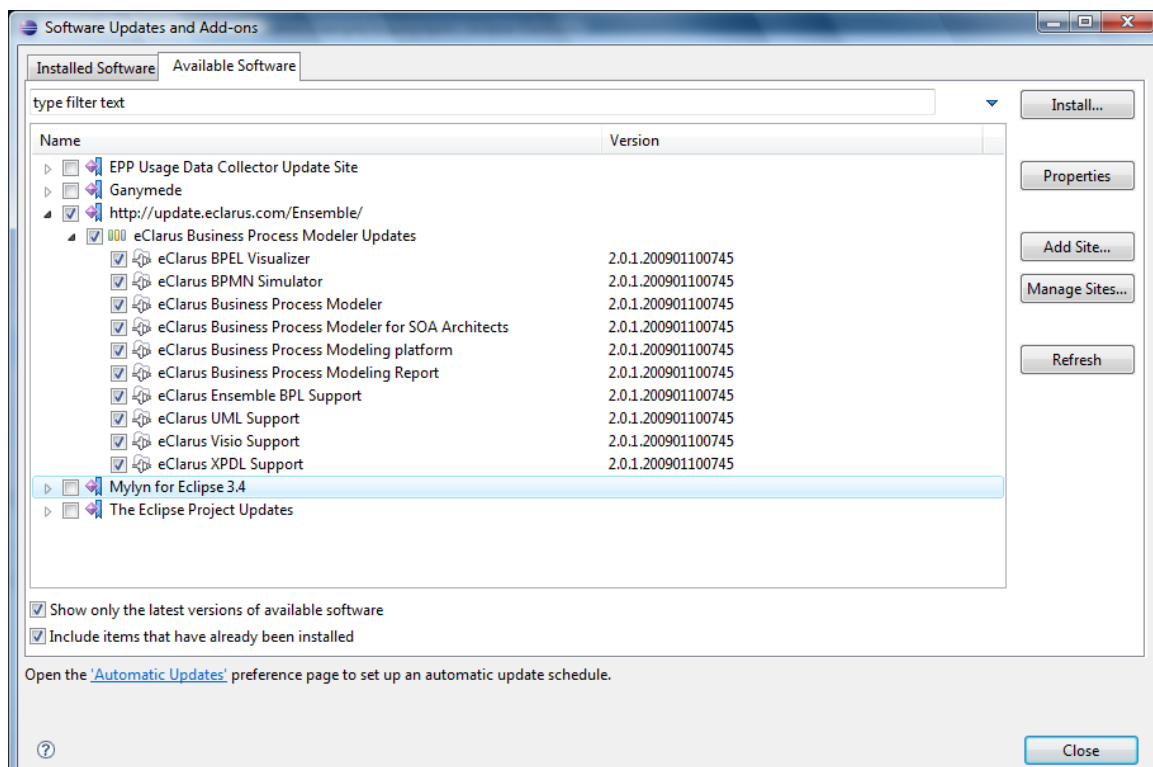
Installing eClarus Business Process Modeler for SOA (with Ensemble BPL Support)

Installing Eclipse 3.4 IDE with Java/BIRT developer

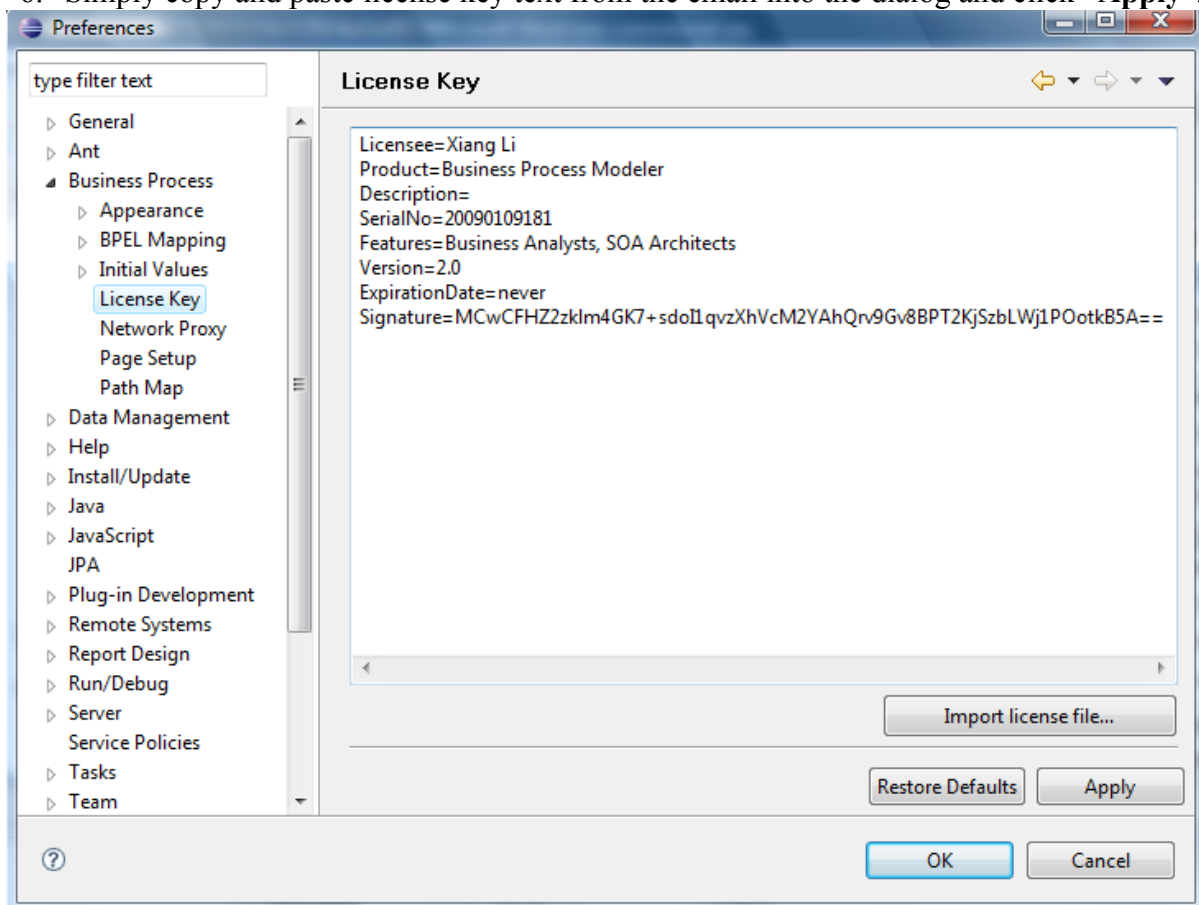
1. Follow URL and select the mirror site to download (<http://www.eclipse.org/downloads/download.php?file=/technology/epp/downloads/release/ganymede/SR1/eclipse-reporting-ganymede-SR1-win32.zip>)
2. Unzip to install Eclipse IDE

Installing eClarus Features

1. Launch Eclipse, and then click **Help > Software Updates**.
2. Select "Available Software" pane.
3. Add eClarus Update site:
 - Click "**Add Site**" button. The Add Site dialog opens.
 - Set the URL to "<http://update.eclarus.com/2.1/>", then click **OK**.
 - Select "eClarus Business Process Modeler Updates" feature and click "**Install**"

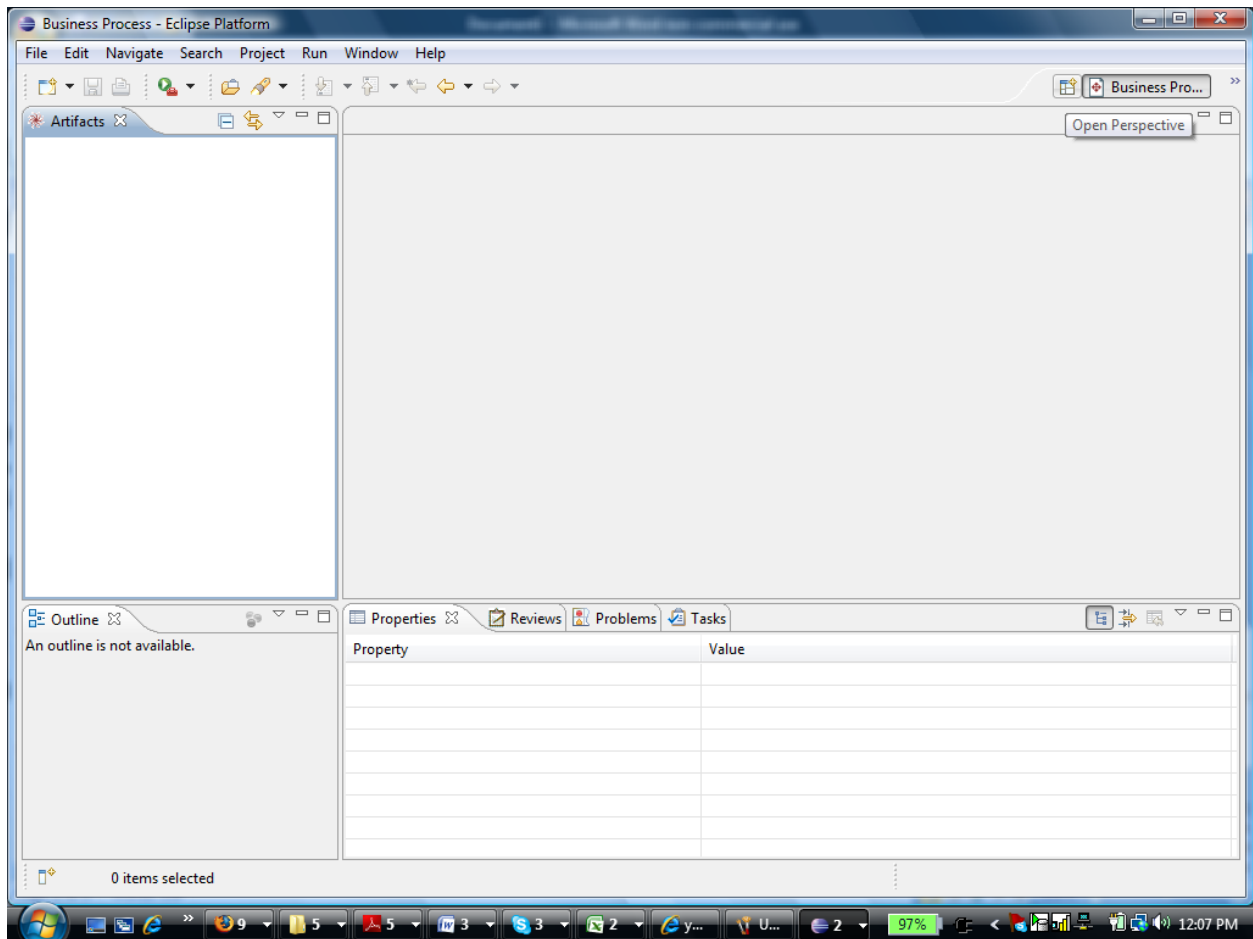


4. Request a trial license from web site <http://www.eclarus.com/downloads.html>. Be sure to use a business email address instead of a public email address. The 30-day trial license will be delivered to the email you specified.
5. From the Eclipse, click **Windows->Preferences->Business Process->License key** to bring up license key dialog.
6. Simply copy and paste license key text from the email into the dialog and click “**Apply**”.



Reverse Engineering an Ensemble BPL to Create a New BPMN Model

- Click **Open Perspective** dialog from the far right corner and select “Business Process” perspective



- Create a new project by clicking **New->Project** and select a template. Use the template from **General** folder.
- Create a new business process model by clicking **New->Business Process Model**. Select **Ensemble BPL** as the data source and click **Next**.
- Select the location of BPL file that needs to be reverse engineered.

Resources

The following information may be helpful during your evaluation.

1) Reviewer's guide

<http://www.eclarus.com/resources/eClarusReviewerGuide.pdf>

2) Demos

<http://www.eclarus.com/demos.html>

3) Technical white paper - BPMN and Ensemble BPL mapping

http://www.eclarus.com/resources/BPMN_BPL_mapping_exempl.pdf

4) Training material

<http://www.eclarus.com/resources/eclarustraining.zip>

Contact

Hong-Lee Yu

CEO

eClarus software, llc

425-241-3700

Hyu2eclarus.com